



**COEUR D'ALENE LAKE - EAST SIDE
MASTER LIST**

October 26, 2016

Black: Homes/Cabins
Red: Pending
Blue: Vacant Land
Yellow: Price Change/New Listing
Green: Short Sale/REO

<u>Location #</u>	<u>Address</u>	<u>Property Description</u>	
1	Beauty Bay NNA Bridger Trl	50' frontage, 4 bdrm, 0 bath, 1300 sq ft, .49 acres, dock/boat slip, open deck, wood stove.	\$170,000 (CBS)
1	6719 S Highway 97	150' frontage, 107 acres.	\$599,900 (CBS)
3	5094 S Seeweewana Ct	76' frontage, 5 bdrm, 2 bath, 3150 sq ft, .26 acre, classic iconic lake home, 660 sq ft covered porch, updated kitchen, covered dock, level lawn, jet ski lift, furniture, furnishings & 21' 1983 Sea Ray Cuddy boat all included.	Click Here to View Listing \$790,000 (CBW) BILL FANNING
3	5144 S Seeweewana Ct	75' frontage, 6 bdrm, 5 bath, 7425 sq ft, .24 acre, guest apartment, glass elevator, granite, marble, hardwood, large dock, grass to water, fully furnished.	\$2,200,000 (CBS)
4	4471 S Eddyville Rd	150' frontage, .53 acre, driveway, parking pad, drain field, dock, lawn to waters edge.	\$400,000 (NRG)
4	4667 S Eddyville Rd	200' frontage, 6 bdrm, 2.5 bath, 1536 sq ft, 1.2 acres, cabin close to water.	\$405,000 (LSR)
4	Arrow Point Area 19361 S Highway 97	177' frontage, 3 bdrm, 3 bath, 2296 sq ft., 2.6 acres, dock, storage/garden shed, gas fireplace, hardwood floors, private well,	\$939,900 (TSIR)
5	Lot 1 E Hats Ln	100' frontage, .35 acre, private beach, dock w power, property does not approve for septic.	\$175,000 (WCR)
5	Neachen Bay 7209 S Eddyville Rd	32.55 Acre estate. 800'+ lakefront, Custom European 4 Bdrm, 7 bath, 8026 Sq ft. Log Home with 1323 sq .Guest/Caretakers Home (3 bdrm, 1 bath), State of art 3 bay heated workshop. Paddock for horses. Gated Entry. Wine cellar, theater room, gourmet kitchen. Garage also acts as 1,400sf heated garage/recreation space with wood floor basketball/sports court.	Click Here to View Listing \$6,500,000 (CBW) BILL FANNING
6	Sailboat Club Area 6719 S Highway 97	112+ acres, build your dream home or develop this great piece with possible boat slips and marina.	\$599,900 (CBS)
6	NNA Mockingbird Lp	253' frontage, 1.6 acres, private well, septic, gravel road, build your dream lake home	\$399,000 (TSIR)
7	Lot 12 S Catamaran	owner financing terms available, awesome lake a city views, .39 acres, water and sewer to property.	\$125,000 (WCR)
7	ARROW POINT CONDOS	2 & 3 Bedroom units, approx. 1400 sq. ft., 1 & 2 car underground garages, private, peaceful and completely furnished, several units available, marina boat slips available.	\$170,000 & Up See Project Master List
7	5445 S Catamaran Dr	80' frontage, .35 acres, gated subdivision within Arrow Point community with water & sewer, custom engineered plans.	\$149,900 (TSIR)
7	5479 S Catamaran Dr	Deep water frontage, 3 bdrm, 2 bath, 1992 sq ft., .37 acre, private dock, multilevel deck, hot tub, security system, heating/ac new in 2014, bathroom remodel 2015, freshly painted/stained, pellet stove, community water & sewer	\$599,900 (KWR)

Provided by Bill Fanning, Century 21 Beutler-Waterfront
(509) 321-1121 Office, (509) 999-5444 Cell
"You deserve the services of a Specialist!"



**COEUR D'ALENE LAKE - EAST SIDE
MASTER LIST**

October 26, 2016

Black: Homes/Cabins
Red: Pending
Blue: Vacant Land
Yellow: Price Change/New Listing
Green: Short Sale/REO

<u>Location #</u>	<u>Address</u>	<u>Property Description</u>	
8	Echo Bay 5601 S Lakeside Dr	55' frontage, 3 bdrms, 2.5 baths, 3164 sq ft, .34 acre, gated private road, hardwood floors, granite, stainless appliances, spacious decks, main floor master suite, stand by generator.	\$950,000 (CBS)
8	5775 S Lakeside Dr	151' frontage, 5 bdrm, 3.5 bath, 4180 sq ft, .61 acre, gated, flat grassy yard, Trex double boat slip, 2 garages, new roof.	\$998,500 (CBS)
9	Echo Bay 5908 S Panorama View Dr	90' frontage, 3 bdrm, 2 bath, 2352 sq ft, .54 acre, log style home, hardwood floors, granite, large deck, fire pit.	\$599,900 (NRG)
9	Echo Bay 1139 E Thistle Rd	225' frontage, 3 bdrm, 2 bath, 2,946 sq ft., .93 acres, dock/boat slip, covered deck, central vac, community water, septic.	\$949,000 (CBA)
9	Echo Bay 1223 E Thistle Rd	130' frontage, sandy beach area, rebuilt dock, u-shaped slip, newer pilings and new ramp. Lake water system installed/uv filtered and drainfield installed	\$299,900 (CBS)
9	Echo Bay NNA Thistle Rd	170' frontage, .74 acre, partly timber, paved gravel road.	\$398,000 (CBS)
9	Echo Bay NKA Updahl Ct	180' frontage, 1.31 acres, 3 lots, power at property line.	\$175,000 (WCR)
10	7208 S Panorama View Dr	116' frontage, .43 acres, boat dock installed, septic system installed, great views of Mica Bay sunsets, easy access year round.	\$225,000 (CBW) BILL FANNING
			CLICK HERE TO VIEW LISTING
12	Driftwood Point NNA HWY 97	100' frontage, 16x18' trex deck, newer trex dock, storage shed with power. Dock/boat slip	\$106,500 (CBA)
12	26307 S Highway 97	78' frontage, 3 bdrm, 2.5 bath, 2892 sq ft, .21 acre, 3 story home, decks on every level, master suite entire 2nd floor, dock and covered boat slip, furnished.	\$599,000 (CBS)
12	Driftwood Point 26641 S Highway 97	100' frontage, 3 bdrm, 2 bath, 1656 sq ft, .25 acre, 4 storage sheds, furnished.	\$649,500 (RREC)
12	Driftwood Point 805 E Driftwood Ln	Amazing Waterfront Home, Fantastic 3 Lot Estate Property with 208' frontage, Unmatched panoramic view or Mica Bay and incredible sunsets. Close to the city. Includes Lot 18, 19 Driftwood Pt. and lot 20 Second addition to Driftwood Pt. Chalet Style family home, 7 Bedroom, 4 bathrooms, 4100 sq ft, 208' frontage, 2 car garage, tennis court, close to Gozzer Ranch Community, 2 kitchens and 2 family rooms, boat dock, Lot 18 is separate lake lot with septic site approval for 4 bedrooms. Combined site approved for 11 total bedrooms. Call for detail Estate construction planning package or view virtual tour.	\$1,220,000 (CBW) BILL FANNING
			Click Here to View Listing
13	438 E Ganos Ln	75' frontage, 4 bdrm, 2 bath, 1410 sq ft, .61 acre, log cabin, fully furnished, bunk house, workshop, outdoor brick bbq, newer t-dock.	\$629,000 (CBS)

Provided by Bill Fanning, Century 21 Beutler-Waterfront
(509) 321-1121 Office, (509) 999-5444 Cell
"You deserve the services of a Specialist!"



**COEUR D'ALENE LAKE - EAST SIDE
MASTER LIST**

October 26, 2016

Black: Homes/Cabins
Red: Pending
Blue: Vacant Land
Yellow: Price Change/New Listing
Green: Short Sale/REO

<u>Location #</u>	<u>Address</u>	<u>Property Description</u>	
14	Carlin Bay Area Beachhouse Lane	90' frontage, .48 acre, flat building site, dock/metal pilings, water & sewer hookup available.	\$359,000 (CBS)
14	30701 S Highway 97	106' frontage, 3 bdrm, 2 bath, 2192 sq ft, .74 acre, huge shop, grass to waters edge, two docks.	\$600,000 (CBS)
16	Carlin Bay 14918 S Wizards Loop	Undivided interest in lake front lot, 4 bdrms, 1 bath cottage, 1125 sq ft, cabin in very nice condition, wood stove, community water, shared dock. Sewer system holding tank	Click Here to View Listing \$298,500 (CBW) BILL FANNING
17	Half Round Bay Area 37589 S Highway 97	120' frontage, 1 bdrm, 1 bath, 350 sq ft, .26 acre, park model, excellent condition, large deck, boat dock, beach area.	Click Here to View Listing \$225,000 (CBW) BILL FANNING
18	38758 Highway 97	100' frontage on buildable lot, septic and drainfield already installed and RV pad and power already in. Easy access to Coeur d'Alene or Harrison.	\$199,400 (CBS)
19	Half Round Bay 1026 E Merganser Ln	Lake cabin with 1/4 interest in 76' beach lot and dock, 1 bdrm, 1 bath, very cute cottage in great condition. Level lawn beach area, boat slip included, community well. This property affords the best of summer at the lake.	Click Here to View Listing \$219,000 (CBW) BILL FANNING
20	41542 S Highway 97	1960' frontage, 4 bdrm, 3.5 bath, 4044 sq ft, 30.76 acres, level lawn to waters edge, large dock, solar panels, private well & lake irrigation systems.	\$3,385,000 (CBS)
21	Powderhorn Bay 581 E Limerick Loop	91' frontage, 4 bdrm, 3 bath, 3887 sqft., 3.42 acres, gated community, walk-out basement, dock/boat slip, 2nd carport, skylights, hot tub, community well, septic	\$975,000 (REMAX)
22	Powderhorn Bay 19886 S Headlands Dr	537' frontage, grid #250, 5 bdrm, 5.5 bath, 8500 sq ft, 5.02 acres, built in 2013.	\$3,400,000 (TSIR)
22	Powderhorn Bay 8 Headlands Drive	293' frontage, 2.776 acres, private dock, private road and gated access, convenient proximity to world class golf, marina services, country store and gas docks.	\$475,000 (CBS)
23	Powderhorn Bay Project	See Headlands Powderhorn Bay Master List for details.	\$300,000-\$450,000
24	697 E Harlow Point Rd	100' frontage, .48 acre, 700 sq ft L-shaped dock, 20 ft catwalk in deep water, RV hookups, 2 large lights on power poles, 350 gal water tank and pump.	\$224,900 (KWR)
24	NNA Stargazer Ln	179' frontage, 1.16 acres, electricity nearby, relatively level, deep lot dimensions for drain field design.	\$249,000 (CBA)
24	Harlow Point 22039 S Stargazer Ln	101' frontage, .45 acre, dock, boat lift, gazebo, bunk house, 40', 2008, 2 bed, 1 bath travel trailer.	\$200,000 (NRG)

Provided by Bill Fanning, Century 21 Beutler-Waterfront
(509) 321-1121 Office, (509) 999-5444 Cell
"You deserve the services of a Specialist!"

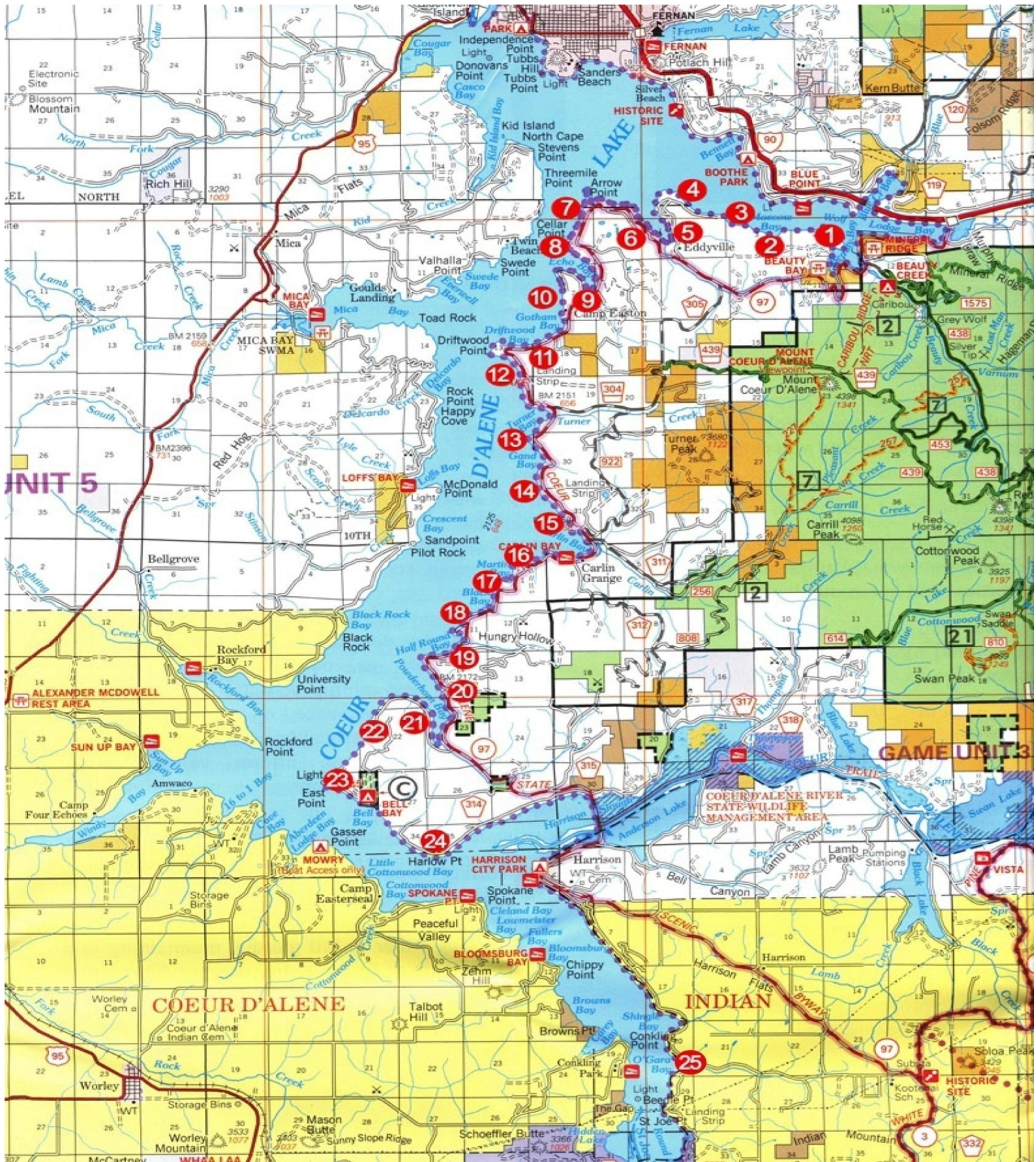


Black: Homes/Cabins
Red: Pending
Blue: Vacant Land
Yellow: Price Change/New Listing
Green: Short Sale/REO

COEUR D'ALENE LAKE - EAST SIDE
ARROW POINT MASTER LIST

October 26, 2016

7	4757 S Arrow Point Dr #109	4 bdrm, 3 bdrm, 3237 sq ft, fitness studio, private boat dock, concierge, 10' ceilings, gourmet kitchen, Wolf and Sub-Zero	\$2,650,000 (GRP)
7	4757 S Arrow Point Dr #202	2 bdrm, 2.5 bath, 2215 sq ft., dock/boat slip, gas fireplace, gourmet kitchen, community water and sewer.	\$1,750,000 (GRP)
7	4757 S Arrow Point Dr #207	4 bdrm, 3.5 bath, 2843 sq ft., dock/boat slip, gourmet kitchen, premium flooring, community water and sewer.	\$2,200,000 (GRP)
7	4757 S Arrow Point Dr #305	3 bdrm, 3.5 bath, 2802 sq ft., dock/boat slip, gas fireplace, hardwood floors, community water and sewer.	\$1,950,000 (GRP)
7	4797 S Arrow Point Dr #D105	2 bdrm, 2 bath, 1266 sq ft., covered deck, pool access, gas fireplace, new paint and carpet, community water and sewer.	\$245,000 (LSR)
7	4797 S Arrow Point Dr #D201	3 bdrm, 2 bath, 1500 sq ft., covered deck, pool access, gas fireplace, community water/well, and sewer.	\$385,000 (REMAX)
7	4797 S Arrow Point Dr D301	3 bdrms, 2 baths, 2000 sq ft, newly remodeled penthouse condo, beautifully maintained.	\$549,000 (RIG)
7	4797 S Arrow Point D304	3 bdrms, 2 baths, 1873 sq ft, clean penthouse, total turn key, unparalleled views, penthouse has lock out capabilities to elevator	\$545,000 (RIG)
7	4910 S Arrow Point Dr #C105	2 bdrm, 2 bath, 1266 sq ft., covered deck, pool access, gas fireplace, central air, community water and sewer	\$198,000 (WCR)



Provided by Bill Fanning, Century 21 Beutler-Waterfront
 (509) 321-1121 Office, (509) 999-5444 Cell
 "You deserve the services of a Specialist!"