



Black: Homes/Cabins
Red: Pending
Blue: Vacant Land
Yellow: Price Change/New Listing
Green: Short Sale/REO

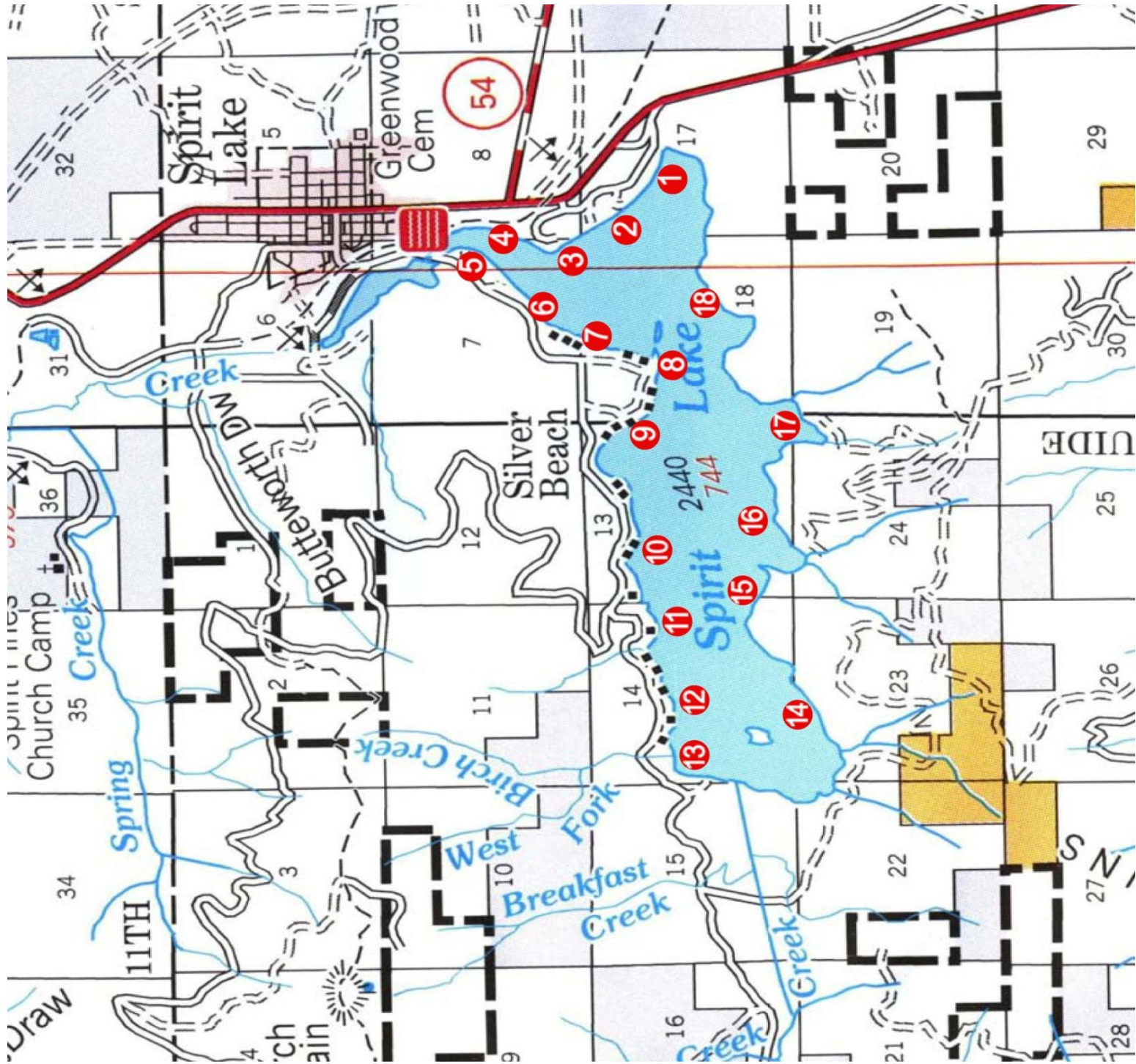
**SPIRIT LAKE
MASTER LIST**

September 12, 2016

<u>Location</u>	<u>Address</u>	<u>Property Description</u>	
1	7712 W Spirit Lake Rd	240' frontage, 3.33 acres, lake front RV park, marina and resort, commercial property, 17 new boat slips, remodeled 4 bdrm, 2 bth house, updated shower house, closed restaurant/bar building.	\$995,000 (KWS)
3	30615 N Nautical Loop	95' frontage, 4 bdrms, 3.5 baths, 3996 sq ft, 3 car detached garage, 0.86 acres, boat dock w/two slips, 2 covered decks, storage shed by lake, forced air heat/air conditioning.	\$939,000 (RREC)
4	0 N Watkins Ln	200' frontage, 1.1 acres, water access only.	\$129,900 (RIG)
5	NNA W Spirit Lake	350' frontage, 1.73 acres, water access only.	\$264,900 (RIG)
8	NNA N Terrace Ave	140' frontage, 5 bdrm, 1.5 bath, 3904 sq ft, .7 acre, 2 small sleeping cabins, newer dock, covered slip, 30x40 shop, grass to water.	\$775,000 (CBA)
8	30080 N Terrace Ave	218' frontage, 5 bdrm, 1.5 bath, 3904 sq ft, 1.16 acres, 2 small sleeping cabins, newer dock, covered slip, 30x40 shop, additional lot.	\$950,000 (CBA)
16	15936 S Spirit Lake Shr	100' frontage, 3 bdrm, 1 bath, 868 sq ft, .21 acre, A-frame, turn key, furnished.	\$249,900 (CBA)
17	15850 S Spirit Lake Shr	75' frontage, 2 bdrm, 1 baths, 504 sq ft, .32 acre, bunkhouse, oversized dock with slip, vehicle access by primitive road, boat access only, furnished.	\$249,900 (RIG)
24	5315 E Shoreline Dr	93.17' frontage, 3 bdrm, 3 bath, 4640 sq ft., .48 acre, dock/boat slip, partly finished daylight basement, city water and sewer.	\$895,000 (CBA)

Provided by Bill Fanning, Century 21 Beutler-Waterfront
(509) 321-1121 Office, (509) 999-5444 Cell

"You deserve the services of a Specialist!"



Provided by Bill Fanning, Century 21 Beutler-Waterfront
(509) 321-1121 Office, (509) 999-5444 Cell
"You deserve the services of a Specialist!"