



Black: Homes/Cabins
 Red: Pending
 Blue: Vacant Land
 Yellow: Price Change/New Listing
 Green: Short Sale/REO

**COEUR D'ALENE LAKE - WEST SIDE
 MASTER LIST**

January 20, 2014

<u>Location #</u>	<u>Address</u>	<u>Property Description</u>	
1	Conkling Park 29636 S Nelson Rd	secondary waterfront, 1 bdrm, 1 bath, 1039 sq ft, panabode cedar home, located directly in back of resort/marina, boat slips available with resort if available.	\$195,000 (CBW)
1	Conkling Park NNA W Conkling Park Drive	Waterfront Lot with seller financing, 50' frontage, Lot is unbuildable, no place for a drainfield	\$119,000 (KWR)
3	Cove Point Area NNA W Fuller Bay Ct	100' frontage, 1 acre, level sandy beach, heavily treed, gentle slope, private setting	\$495,000 (CBW)
3	Cove Point 968 W Geneva Lane	81' frontage, good beach, 4 bdrms, 3 baths, 2470 sq ft, contemporary cabin, community sewer & water, storage shed, year round access, access to common area in back with RV parking and sport court.	\$489,500 (CBW)
6	1943 W Cottonwood Rd	92' frontage, 3 bdrms, 1 bath, 934 sq ft, minutes from boat launch, dock	\$345,900 (NIRE)
6	Cottonwood Bay 2501 W Cliffdwellers Drive	Coeur d'Alene Lake, Cottonwood Bay, 100' frontage, Main Home: 3 bdrms, 1 bath, 1724 sq ft; Guest Cabin: 1 bdrm, 1 bath, 560 sq ft. 180 degree lake views. Spring water system, updated septic system, furnished, tramway for easy access.	\$459,000 (CBW)
6	Cottonwood Rd	100' frontage, 3/4 acre of ground, county road access with old driveway into property and drainfield installed, needs clean up to remove heavy brush and trees to open into many benches to set up for camping and enjoy the water	\$49,000 (CBS)
9	Cave Bay NNA Lake Shore Drive	70' Frontage, great view lot, private setting, .16 acres, community sewer and water,	\$175,000 (CBW)
13	Rock Creek Ridge Sunup Bay	SEE ROCK CREEK RIDGE, Rock Creek Ridge at Sunup Bay stands apart on the shores of world famous Coeur d'Alene Lake in North Idaho. Located a short distance south of the City, this spectacular property is limited to 33 estate-size parcels, and the gated community offers a secluded and spacious living opportunity covering an impressive 250 acres. Waterfront lots feature 3-6 acres with 300' to 350' of lake frontage and a boat dock with covered slip. Ridge lots have generous 4-20 acres parcels including spectacular views of the lake. Features include a community beach with 800' lake frontage and a boat slip for each lot. Welcome to Coeur d'Alene Lake.	\$149,000- \$499,500
14	Windy Bay 8190 W Pin Oak Rd	100' frontage, 4 bedrooms plus loft, 2 bathrooms, 1848 sq ft, level beach, boat dock with shore station lift, beach storage shed, fireplace, open deck and patio.	\$549,500 (CBW)

Provided by Bill Fanning, Century 21 Beutler-Waterfront
 (509) 321-1121 Office, (509) 999-5444 Cell
"You deserve the services of a Specialist!"



Black: Homes/Cabins
 Red: Pending
 Blue: Vacant Land
 Yellow: Price Change/New Listing
 Green: Short Sale/REO

**COEUR D'ALENE LAKE - WEST SIDE
 MASTER LIST**

January 20, 2014

<u>Location #</u>	<u>Address</u>	<u>Property Description</u>	
14	20014 S Moonrise Trail	75' frontage, 4 bdrms, 3 baths, 3750 sq ft, 10.46 acres, mountain views, boat dock included, with two boat slips and a party deck for beach BBQ's, home furnished, each bedroom has it's own sliding glass door to deck, bonus area that can be converted to kitchen or wet bar, plenty of storage	\$750,000 (KWR)
14	Windy Bay 20163 South Moonrise Trail	75' Frontage, 4 Bdrms, 3 baths, 2973 sqft custom waterfront log home, .81 acres grand vaulted ceilings in the great room, wrap around decks for entertaining, granite in kitchen and baths, private level waterfront	\$850,000 (TSIR)
14	20163 S Moonrise Trail & 7500 W Ben Point Rd	two separate homes, 75' frontage, combined homes; 8 bdrms, 9 baths, 9969 sq ft, secondary lot (mls# 13-5750) 6 fireplaces, 2 en-suite masters, 3 car attached garage, full guest apt with kitchen, 5+ wrap around decks	\$1,400,000 (TSIR)
14	Windy Bay 6966 W Ben Pointe Rd	100' frontage, .88 acres, 3 bdrms, 2.5 baths, 2456 sq ft, recently undergone a remodel, room to build/store vehicles on the additional property across the paved road.	\$1,100,000 (CBS)
16	Watson Road	90' deep water frontage, .44 acres, community sewer and water to property, easy access,	\$395,000 (CBS)
16	Rockford Bay 20764 S Watson Rd	101' frontage, 4 bdrms, 3.5 baths, 2 car attached garage, 3609 sq ft, year round gated area, beautiful lakefront home with deep water and excellent viewing from private decks.	\$819,000 (CBA)
16	Rockford Bay 19234 S Watson Road	145' frontage, high quality construction, 4 bdrms, 4 bath, 4018 sq ft, 2 car detached garage with guest quarters above, paved driveway, community water and sewer, dock/boat slip, great deck, fire pit.	\$1,895,000 (CBW)
16	Rockford Point 21092 S Watson Road	103' frontage, 3 bdrms, 2 baths, 1488 sq ft, rancher w/daylight basement, great privacy, boat dock	\$545,000 (CBW)
16	Rockford Bay 19760 S Watson Road	90' frontage, 6 bedrooms, 4 baths, 4440 sq ft, custom log home in immaculate condition, granite countertops, new dock with covered slip, community sewer & water.	\$1,495,000 (CBW)
18	Rockford Bay 18079 S Kalispel Ct	21.19' frontage, 3 bdrms, 2.5 baths, 2866 sq ft, 4+ attached garage, year-round living, private dock with covered slip, beach, RV parking	\$589,900 (CBA)
18	Rockford Bay 6592 W Boardwalk Ln	101' frontage, 5 bdrms, 5 baths, 2782 sq ft, grass at waters edge, sandy beach, new dock, private well, updated septic, 2 secondary lots included, all furniture included	\$899,000 (CBS)

Provided by Bill Fanning, Century 21 Beutler-Waterfront
 (509) 321-1121 Office, (509) 999-5444 Cell
"You deserve the services of a Specialist!"



Black: Homes/Cabins
 Red: Pending
 Blue: Vacant Land
 Yellow: Price Change/New Listing
 Green: Short Sale/REO

**COEUR D'ALENE LAKE - WEST SIDE
 MASTER LIST**

January 20, 2014

<u>Location #</u>	<u>Address</u>	<u>Property Description</u>	
19	Rockford Bay 7298 W Rockford Bay Rd	100' frontage, 3 bdrms, 1 bath, 860 sq ft, sandy pristine beaches, and its own private water well for the home. Huge .65 lot, gorgeous views, and a 65' boat deck.	\$750,000 (WCR)
20	Black Rock Beach Estates 17126 S Twisted Pine Rd	90' frontage, 3 bdrms, 3 baths, 2720 sq ft, 2 car attached garage, dock, gated community, close to Rock Creek Golf Club. Newly updated flooring to white oak hardwood floors and limestone tile. Brand new window coverings to frame the exquisite views.	\$795,000 (CBW)
21	Black Rock Bay 15992 S Turquoise Dr	60' frontage w/ shared 140' frontage makes 200' total frontage, every room in home has view of lake, 3 bdrms, 2 baths, 3040 sq ft, 2 car detached garage	\$949,000 (SPA)
21	Black Rock Bay 15992 S Turquoise Dr	140' shared frontage, 3 bdrms, 2 baths, 3040 sq ft, 2 car detached garage, spa in master, view of lake from every room, large view deck, paved driveway, well water, basetball court	\$799,000 (SPA)
22	Pilot Rock 14242 S Kvern Rd	297' frontage, 3 bdrms, 2 baths, 1600 sq ft, 1 car detached carport, very private setting, dock, barn/garage and separate sleeping cabin w. electricity are included	\$549,500 (WCR)
24	Loffs Bay 0 S Captains Rd	100' frontage, year round access, .53 acres,	\$600,000 (CBS)
26	NKA Mitchell Bay	100' frontage, private 2 bdrm, 2 baths, 1248 sq ft, open and bright with vaulted ceilings, lots of windows, and wood flooring, city view from trex deck, 2 slip covered dock, firepit	\$700,000 (JPG)
28	Mica Bay 3568 W Lightning Tree	300' frontage, 8 bdrms, 7.5 baths, 11000 sq ft, 3 car detached garage, 4.5 acres, movie theater, wine cave, sports bar, outdoor stone patio, gas fireplace, master suite, formal dining	\$10,500,000 (CBS)
31	Swede Bay (Newton Way) Multiple Properties	Vacant Lots-See project master list.	\$1,100,000-4,800,000
31	Swedes Bay 7502 S Newtons Way	.86 acres, 15 minutes to town, Facing west in Swede Bay, all utilities and ready to build, private road gated for privacy, spectacular views, wooded	\$995,000 (SP)

Provided by Bill Fanning, Century 21 Beutler-Waterfront
 (509) 321-1121 Office, (509) 999-5444 Cell
"You deserve the services of a Specialist!"



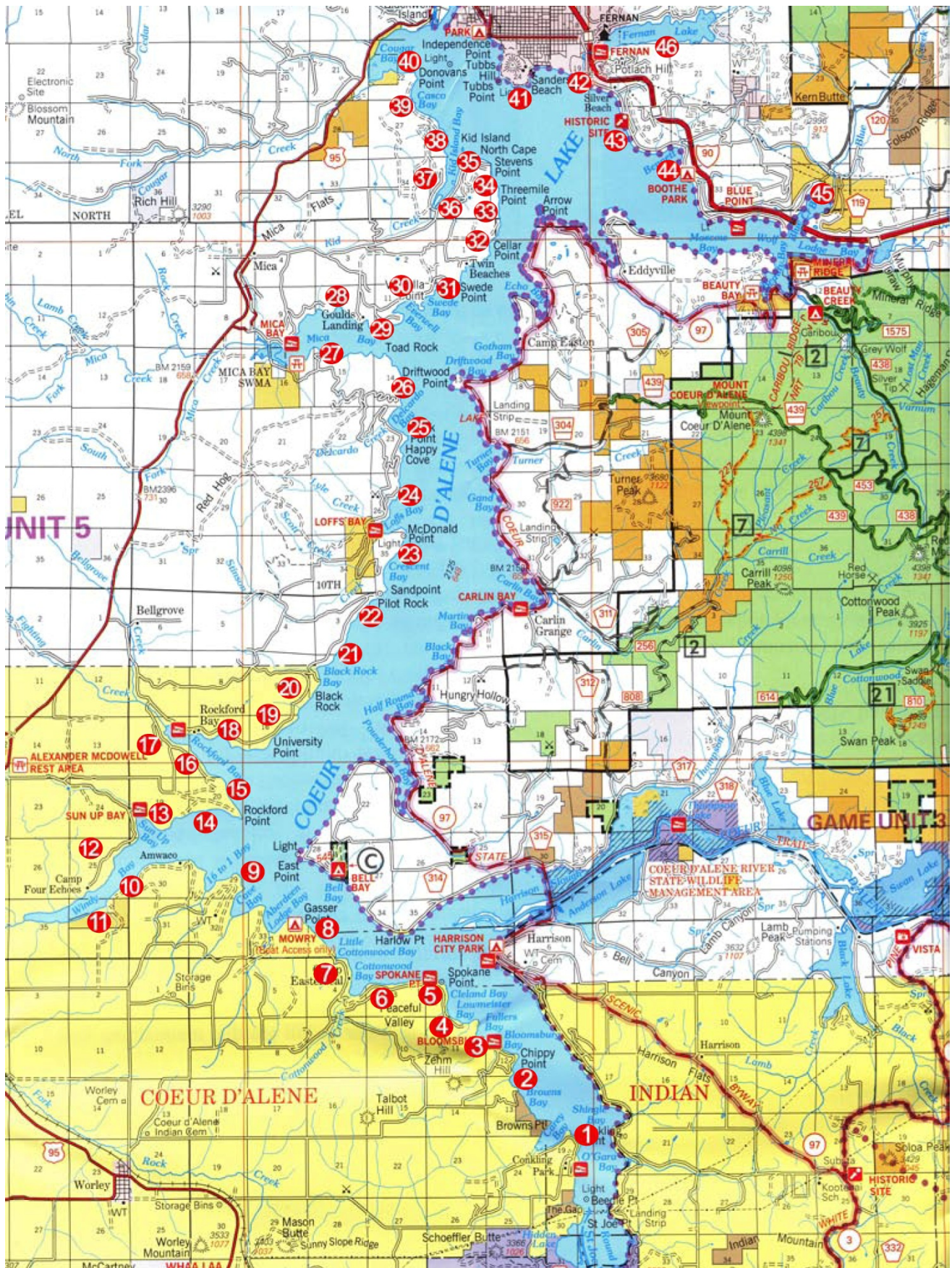
**COEUR D'ALENE LAKE - WEST SIDE
MASTER LIST**

January 20, 2014

Black: Homes/Cabins
Red: Pending
Blue: Vacant Land
Yellow: Price Change/New Listing
Green: Short Sale/REO

<u>Location #</u>	<u>Address</u>	<u>Property Description</u>	
34	Steven's Pont Estates Lot 11 Threemile Pt Rd	121.21' frontage, .647 acres, paved roads, water, sewer, power, phone, cable tv and internet. Close to downtown Coeur d'Alene	\$590,000 (CBS)
34	Steven's Point Estates 4640 S Threemile Pt Rd	120' frontage, gated community, area of high end homes, view of CDA golf resort and Arrow Point, community water and sewer.	\$675,000 (CBW)
34	Steven's Point Estates 4642 S Threemile Pt Rd	128' frontage, gated community, area of high end homes, view of CDA golf resort and Arrow Point, community water and sewer.	\$690,000 (CBW)
37	Kidd Island Bay 3710 S Westway Dr	120' frontage, 4 bdrms, 5.5 baths, 7300 sq ft, 3 car attached garage, handcrafted Timber Frame home, lake and mtn views, 3.5 stories, 15 mins from town	\$3,500,000 (CBA)
37	NKA S Westway Dr.	.32 acre parcel surrounded by tall timber. Picturesque views of lake CDA with access to Kidd Island Sewer District and available power and phone all within 25 mins of CDA.	\$215,000 (WCR)
40	Cougar Bay 3730 S Highway 95	500' frontage, 5 bdrms, 3 baths, 4084 sq ft, ONLY Bed & Breakfast on the lake, gourmet kitchen, formal dining, fireplace is in, plumbing is in, electricity-in! Huge shop, dock & pier with new floatation & decking.	\$795,000 (WCR)
42	2011 S Island Green Dr	Lakefront living at it's finest. 5 Star Hotel quality, 14' x 36' slip, exercise center, lifetime membership at World Famous Golf Course. 5100 sq ft, all on one level.	\$3,400,000 (CBA)
42	Sanders Beach 1102 E Lakeshore Dr	180' frontage, 5 bdrm, 4.5 bath, 6000 sq ft, private lawn to water's edge, sandy beach, 1100 sqft dock and deck areas, covered deck	\$4,250,000 (JPG)
44	8410 E Coeur d'Alene Lake Dr	300' waterfront with private paved road, 4 bdrms, 3 baths, 4000 sq ft, 2 car detached garage, 2 bd guest house, 10 acres	\$3,500,000 (CBS)
44	3905 S Appian Ct	73' frontage, 3 bdrms, 5 baths, 6300 sq ft, 2 car attached garage, gourmet kitchen with gourmet appliances, custom cabinets, gas fireplace, large family room with custom-designed wet-bar and large maintenance landscaping	\$2,450,000 (TSIR)
44	Bennett Bay 9083 E Coeur d'Alene Lake	200' frontage, 1 bdrm, 1 bath, 612 sq ft, 2 lots with 2 docks, a-frame cabin on one lot and a variance to build a 28x36 two story shop on 2nd lot. Power, lake water rights, compost toilet, gas stove, plumbed for water with holding tank, RV power hook up on second lot.	\$395,000 (CBS)

Provided by Bill Fanning, Century 21 Beutler-Waterfront
(509) 321-1121 Office, (509) 999-5444 Cell
"You deserve the services of a Specialist!"



Provided by Bill Fanning, Century 21 Beutler-Waterfront
 (509) 321-1121 Office, (509) 999-5444 Cell
"You deserve the services of a Specialist!"